

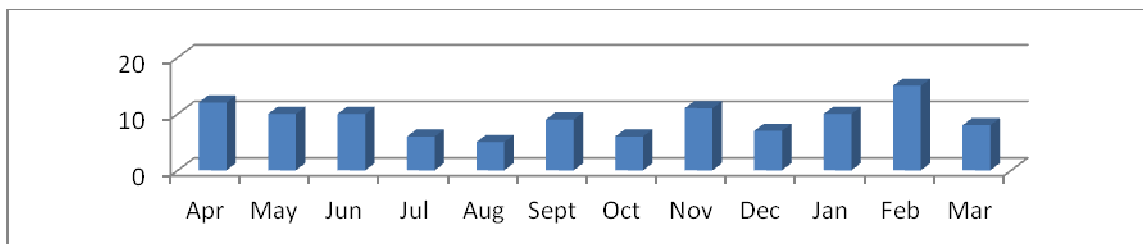
## External Funding Impact Report April 2013 – March 2014

This Report summarises the funding support provided for the period April 2013 to March 2014 and aims to gauge the impact of the funding received on the projects supported.

### Background

The External Funding Team received 109 funding enquiries throughout the financial year 2013-14. The table below indicates the spread of enquiries. It shows a slight reduction in the number of enquiries over the summer holiday period, however the total of 109 is 5 up on last year's count of 104.

Apr	May	Jun	Jul	Aug	Sept	Oct	Nov	Dec	Jan	Feb	Mar
12	10	10	6	5	9	6	11	7	10	15	8

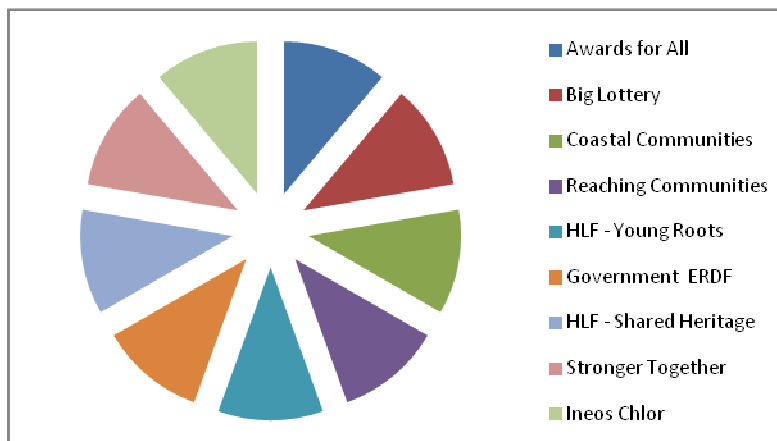


### Funding secured:

Between April 2013 and March 2014, 9 projects have been successful in obtaining funding, receiving a total of £2,092,624.

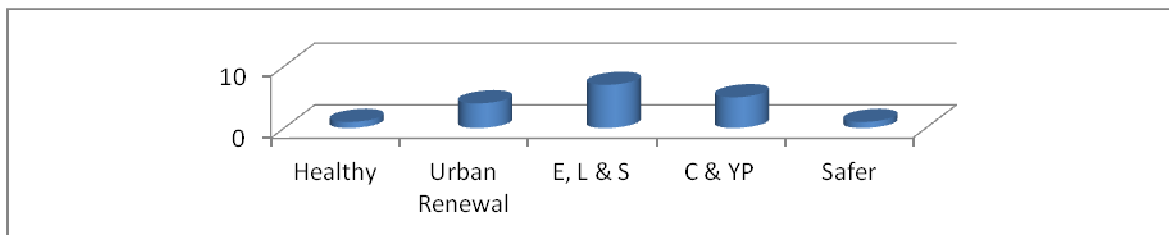
This year successful applications have been made to the following funders:

- ❖ Awards for All
- ❖ Big Lottery
- ❖ Big Lottery – Coastal Communities Fund
- ❖ Reaching Communities
- ❖ Heritage Lottery Fund – Young Roots
- ❖ Heritage Lottery Fund – Share Heritage
- ❖ Government Funding Stream - ERDF
- ❖ Stronger Together – Warrington Borough Council
- ❖ Ineos Chlor Community Grant



## Meeting strategic priorities

All the projects supported have met at least one of the Council's strategic priorities. This year, all but two of the projects focused on Employment, Learning and Skills. Urban Renewal and Children and Young people were the joint second priority for projects. This reflects the strategic, large-scale regeneration projects that the External Funding Team is now supporting.



## Type of project

The External Funding Team has continued to focus on funding bids for larger-scale projects, whilst colleagues in Arts Development, Sports Development and Community Development support the projects bidding for smaller pots of money.



The project which received the biggest single allocation of funding this year was again **Sci-Tech Daresbury** which received 'in principle' support of £1.3 million ERDF funding to support the continued development of the Sci-Tech Daresbury Campus, which is a major center for Science & Innovation in the Borough. A process of due diligence will be followed before the funding is available to draw down.

**The Sankey Canal 'Linking the Locks'** project accounts for 4 of the above successful projects, receiving a total of £673,932 this financial year. The Team forms part of the Sankey Canal Steering Group and has provided support with bid writing, project planning and on-going consultation.



The four projects included: a small application to Stronger Together, which funded some marketing material to raise awareness of the project, followed by the Heritage Lottery, Shared Heritage project in which young people produced a DVD of the Sankey Canal and its history. The DVD was given its premiere at Catalyst Science Discovery Centre in May 2014. The Project also received funding of £9,000 money from the Ineos Chlor Community Fund to site interpretation boards along the canal.

The second largest allocation of funding received this year was from the Coastal Communities Fund (£653,708) which was allocated to The Sankey Canal project. The first part of the project involves capital works to renovate the Marsh House bridge which will assist the regeneration of the industrial estates along the canal. The second part involves developing apprenticeships and volunteering opportunities, generating better business growth opportunities for businesses sited along the canal and will also provide SCARS with a larger volunteer base.

These larger, long-term projects now take up the majority of the Team's time. They involve all team members in different aspects of the project, for example: providing the funding information and guidance needed to make the funding application, bid writing, supporting the due diligence process, developing and implementing consultation strategies, monitoring the project and making the claims each quarter.

## Methodology

Previously the External Funding Team has circulated impact questionnaires to all the projects which have received their advice and support. This methodology is best suited to the smaller scale projects which have an immediate impact following receipt of the funding. It is less suited to the larger regeneration projects such as Sci-Tech Daresbury and Sankey Canal as these are longer term projects and still ongoing.

## **Impact on Learning Skills, Training and Job Creation**

The support services offered by Nightstop include education, employment and training. Young people are taught life skills, health and safety, budgeting and finance which help to develop their confidence and wellbeing, supporting them into independent living. To date over 200 clients have been supported on this programme. Volunteer numbers have been increased to support the young people.

The Coastal Communities Funding which was awarded to the Sankey Canal project in the final months of this financial year will create 2 new jobs as part of the project. The main impact on skills development and training will occur in the coming financial year.

## **Impact of funding secured**

The impact is possibly best understood via the case studies below. Case studies are also included for three projects which the Team supported with successful funding bids in the previous financial year. These projects are now able to provide meaningful impact assessments. With regards to the other projects which have received funding this financial year, it is too early in the life of the project to record any meaningful impact assessment.

### **Project example: Case Studies (2013/14)**

#### **Nightstop**

The project aims to provide longer-term supported lodgings and emergency accommodation for homeless young people in Halton and provide training and life skills to help integrate them back into the local community. The project will also introduce a mediation and counselling service for young people and their families to prevent homelessness re-occurring. The project also includes volunteers in all aspects of its work.

The External Funding Team worked with Nightstop to identify suitable funding sources for the project. We gave advice on funding criteria and worked with them on their first stage and full application. We continue to provide funding support Nightstop.

#### **Sankey Canal Shared Heritage**



SCARS have been working with Red Rose Media, based at Penketh High School, to produce a DVD about the history of the Canal, and what it means to young people today. The DVD includes footage of the Canal, historical and ecological information, plus interviews with members of SCARS and the pupils.



Young people involved in the project, including West Bank School pupils, have also been working with SCARS members to develop and update the SCARS website, promoting SCARS vision to see the Sankey Canal fully restored. The finished DVD and new website will be launched at an event at Catalyst Science Discovery Centre

### **Project example: Case Studies (2012/13)**

#### **Halton Carers Centre**

The External Funding Team has been supporting Halton Carers Centre in recent years to help secure their sustainability and extend their services. Funding has been successfully secured from a number of sources, most recently from the Big Lottery Fund's Reaching Communities programme. Funding for three years was secured which helped the Carers Centre to plan for the future and extend its outreach work. The External Funding Team is continuing to support the Carers Centre with funding applications for further outreach work and for the ongoing costs of the Centre, helping to ensure that the needs of Carers in the Borough are met.

#### **Community Transport:**

The External Funding Team has been supporting Halton Community Transport (HCT), over a number of years, to help secure its services. Funding has been successfully secured from a number of sources, but most recently from the Big Lottery Fund's Reaching Communities Fund. The funding has helped HCT to continue its

service to the Independent Living Centre and has helped residents from the rural area of Daresbury to access transport to essential services and shopping. The team will continue to support HCT with their funding priorities.

### Moughland Lane Scout Hut



The External Funding Team has supported the Moughland Lane Scout Group in successfully obtaining funding from WREN to renovate their Scout Hut on Moughland Lane. The improvements have resulted in the Scout becoming a warm and welcoming building and it is now being used by other local organisations and members of the local community for a variety of events.

### Other work of The External Funding Team:



**Wren Training Event.** The External Funding Team have worked closely with Richard Smith, Senior Grants Manager from WREN (Waste Recycling Environmental), for a number of years and the Team was pleased to invite Richard to present at a half day event at Catalyst Science Discovery Centre. Richard was able to update a number of community groups and Council colleagues on the best way to achieve a successful funding application with WREN.



**Funding Fair: Older people.** The focus of the Funding Fair held in October 2013 was aimed at organisations in the Borough that work with older people. The Team was very active in organising, facilitating and inviting funders to attend the event and sign posting community groups to relevant colleagues within the HBC. The Sports Development Team reported that the seven older peoples' groups they spoke to at the Funding Fair, later received funding as a direct result of their attendance at the Fair.

### Current Projects Include:

The Team has traditionally helped local groups in getting funding for projects, but increasingly the Team's time is taken up with much larger funding bids working with private, voluntary and public sector partners.

### Sci-Tech Daresbury



This is a 25 year project of major strategic importance for the Borough of Halton. Sci-Tech Daresbury is a world class science and innovation campus, with a vision to provide a 'location for life' for the fast growth businesses located at Daresbury.

The External Funding Team has made a considerable contribution to the project, working in partnership with private sector partners, and in June 2013 the project received £7.4 million from the Regional Growth Fund. The External Funding Team supported the project with the due diligence

process and continues to assist with monitoring and claims for the Regional Growth Fund, alongside a considerable work load preparing other funding bids, e.g. ERDF, EZ Capital Grant and Growing Places Funding.

## Sankey Canal 'Linking the Locks'



This is a £20 million project which is a joint venture between Halton Borough Council, Warrington Borough Council and Sankey Canal Restoration Society. The project aims to restore the Sankey (St Helens) Canal making it navigable again between Spike Island and Fiddlers Ferry, and encouraging tourism and heritage activities in the area adjacent to the canal. This will make a valuable contribution to safeguarding a very important historical asset for the Boroughs of both Warrington and Halton.

This financial year the project has received 4 pots of money, most notably from The Coastal Communities Fund for £653,708. The External Funding Team will now be working with colleagues from Warrington Borough Council who are leading on the project, and the Team will take an ongoing role monitoring the project as it progresses to ensure that the project meets its intended outcomes.

A £5 million application to the Heritage Lottery Fund for much of the restoration of this part of the canal is to be submitted 2014-15.

## 2014-20 European Programme



Preparations for the new 2014-20 European Programme have started in earnest. The 27 EU Member States agreed the budget in February 2013. The External Funding Team has been working with partners to develop Halton's Priorities and feed these in to the Liverpool City Region ESIF, to ensure that Halton receives its share of the European Funding allocations. The Liverpool LEP is a unique alliance of over 450 businesses and organisations sharing a common goal for strategic economic development and business growth. It is

tasked with accelerating growth and development in the Liverpool City Region, including Halton, and will be responsible for the allocations of EU funding streams, such as the European Regional Development Fund (ERDF) and the European Social Fund (ESF).

Louise Vaudrey has joined the External Funding Team as Funding Development Officer, with responsibility for European Funding. Louise can be contacted via email: [louise.vaudrey@halton.gov.uk](mailto:louise.vaudrey@halton.gov.uk) or tel: 0151 511 6120.

## Some of the other larger current projects include:

- ❖ **Exploring Halton's Collections:** A project to bring together local history society collections, making Halton's heritage more accessible, bidding to Heritage Lottery Fund. The project has just received funding of £55,200 for the 'Working Lives' project.
- ❖ **Connecting Cheshire:** A project to bring Superfast Broadband to areas of Cheshire, Halton and Warrington which are currently struggling with slow access to the internet. External Funding is leading on Policy and Funding. The Team is currently supporting a bid to BDUK for £2 million.
- ❖ **Norton Priory:** A project to refurbish the current museum facilities and develop the location as a tourist attraction: External Funding is supporting with securing match funding for a Heritage Lottery Fund grant. Project cost in the region of £4.5 million
- ❖ **Catalyst Science Discovery Centre:** A project to refurbish the current museum facilities and develop the location as a tourist attraction. The External Funding Team is supporting with bids to various funding streams as well as a funding strategy.
- ❖ **The Oglet:** A project to improve the pathways along this scenic piece of coastline, repairing the damage done by 4x4 vehicles and the overgrowth of vegetation. Funding of £50,000 has just been secured from WREN.
- ❖ **3MG:** A multi-million pound project in partnership with The Stobarts Group to create a world class multi modal logistic centre in Halton. This project has received Regional Growth Fund (RGF) funding and Growing Places Fund (GPF) funding.
- ❖ **Hale Village Hall:** A Reaching Communities Buildings bid to rebuild the village hall at Hale.

- ❖ **Victoria Park Glasshouses:** A project to renovate the glasshouses at Victoria Park, replacing the entrance doors, adding solar film to parts of the glasshouse to improve the environment inside the building, improving access for all and creating a staged area to increase the possible uses for the building. A WREN bid was submitted in July.
- ❖ **Canal Boat Adventure Project:** This project has just passed stage 1 of their Reaching Communities bid to rebuild The Woodlands building in Castelfields, increase their partnership working and there by sustain and develop the work of their project throughout the Borough. Stage 2 is due to be submitted in the autumn.

## Conclusion

- Although the amount of funding secured in this finance year is less than last year, the Team has been exceptionally busy supporting the larger scale regeneration projects in the Borough.
- The projects which received support from the External Funding Team have provided very positive feedback and feel they have been much more successful in obtaining funding than they would have been without the support of the Team. The Team continues to provide a valuable service for the Borough, supporting organisations in the Borough that are aiming to meet at least one of Halton Borough Council's 5 strategic priorities.

## Feedback Comments included:

Sankey Canal – Shared Heritage

*"We were very pleased to work with the External Funding Team. Their expertise and contributions were vital to the setting up of the grant and their continued enthusiasm and participation in the project's organisation was second to none"*

Nightstop – Accommodation and support for homeless young people

*"I couldn't have done it without you! 10/10."*

*The External Funding Team were absolutely fantastic, they made sense of everything, and helped me when I was setting up on my own. It was a big learning curve and the External Funding Team supported me through the process and helped with the funding applications. They would be my first point of call for any future advice.*

*I also appreciate getting the funding bulletins the team circulate; this has been really useful in looking for other funding.!*